

Truly Travel Management Solutions

43/43 Soi Phrayapirane, Tungmahamek, Sathorn, Bangkok 10120

Telephone: 66 (0) 2249 4911 / Facsimile: 66 (0) 2249 9977

Email: mice@travelclick.biz Website: <http://www.TravelClick.Biz>

INFORMATION

One Day Tour & Package Tour				
Bangkok, Nakhon Patom, Ratchaburi, Samutsongkram, Samutprakarn, Kanchanaburi, Ayutthaya, Pattaya				
CITY	Attractions & Sight seeing		Code	Details
Bangkok	Half day	Royal Grand Palace & Emerald Buddha	SJB1	Royal Grand Palace & Emerald Buddha & WatPhraKaew
	Half day	Temples Tour	SJB2	WatTraimitr & Wat Pho
	Half day	Amazing Bangkok Tour	SJB3	Royal Grand Palace & Emerald Buddha & WatPhraKaew Cross Chao Phraya River by boat to visit WatArun
	Full day	The landmark of Bangkok	SJB4	Royal Grand Palace & Emerald Buddha & WatPhraKaew WatTraimitr & Wat Pho & WatArun. (Lunch included)
	Half day	Bangkok Canal by Long Tail Boat	SJB5	Bangkok-Noi Canal & National Museum of the Royal Barges
	12.00-16.30	The Antique Thai House & Palace	SJB7	Jim Thompson House & SuanPakkad Palace & local store
	Full day	Safari World	SJB23	The first, the Safari Park, house a large variety of animals & local product store (Lunch included)
	Full day	Dream World	SJB24	Land of the major world legend and exciting playing machines & local product store (Lunch included)
NakhonPathom , Ratchaburi, Samutsongkram	12.00-18.00	Thai Cultural Show at Rose Garden	SJB9	Rose Garden, Thai Martial Arts:Thai-style boxing show, Sword fighting, Thai Wedding Ceremony Show ,local store
	12.00-18.00	Sampharn Elephant Theme Show	SJB10	Elephant Ground & Zoo, Crocodile Wrestling Show, local store
	06.30-14.00	Damnernsaduak Floating Market (Morning Market)	SJB12	Long tail speedboat along the canal to floating market, visit Rom-Hoob Market (walking on train rails)
	Full day 06.30-18.00	Damnernsaduak Floating Market, Sampharn Elephant Theme Show & Thai Cultural show at Rose Garden	SJB13	Long tail speedboat along the canal to floating market, Royal Thai handicraft Village, lunch, Elephant Ground & Zoo, Crocodile Wrestling Show, Rose Garden, local store
	14.00-18.00	Amphawa Floating Market (Evening Market)	SJB11	Visit Rom-Hoob Market, Visit Amphawa floating market and typical market along Canal and Lovely Village
Samutprakarn	07.00-13.00	Ancient City Tour	SJB8	Like a door opened to the cultural in heritage of Siam.
Kanchanaburi	06.30-18.00	River Kwai with Death Railway	SJB18	JEATH War Museum, Kanchanaburi War Cemetery, The Bridge over the River Kwai, local product store (Lunch included)
Ayutthaya	06.30-15.00	Ayutthaya World Heritage	SJB20	Bang Pa-in Palace, Variety of PhraThinang (Throne-Halls), WatYaiChaimongkol, WatMahathat local product store (Lunch included)
	07.30-16.30	Ayutthaya by cruise	SJB21	Bang Pa-in Palace, Step aboard the luxurious cruiser "Grand Pearl" at WatPotangtai Pier enjoy the fascinating scenery along the river to the River City Pier with coffee break (Lunch included)
Pattaya	06.30-18.00	Pattaya & Coral Island	SJB22	Pattaya beach has a charm of its own-exotic beach. Depart by boat to Coral Island, the largest of Pattaya's archipelago

- All Rates are valid until 31 October 2016
- For more attraction and sightseeing program and information & Rates for March 2017 please contact or make reservation please send email to mice@travelclick.biz

Truly Travel Management Solutions

43/43 Soi Phrayapirane, Tungmahamek, Sathorn, Bangkok 10120

Telephone: 66 (0) 2249 4911 / Facsimile: 66 (0) 2249 9977

Email: info@travelclick.biz Website: <http://www.TravelClick.Biz>



Travel Click
Travel Management Solutions
Travel Click (Thailand) Co., Ltd.

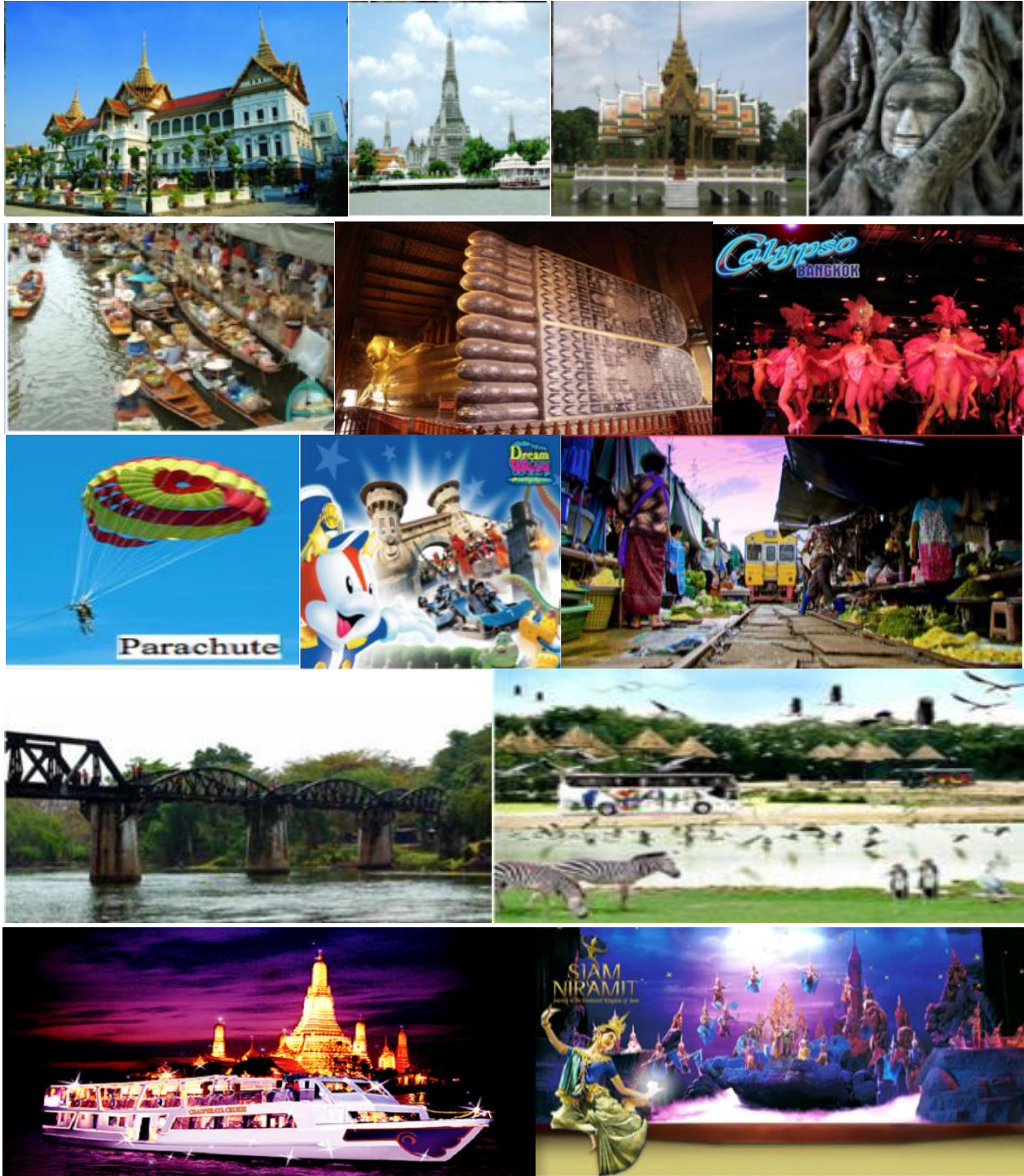
Travel Click (Thailand) Co., Ltd.



Truly Travel Management Solutions
43/43 Soi Phrayapirane, Tungmahamek, Sathorn, Bangkok 10120
Telephone: 66 (0) 2249 4911 / Facsimile: 66 (0) 2249 9977
Email: mice@travelclick.biz Website: <http://www.TravelClick.Biz>

INFORMATION

BANGKOK & OTHERS PROVINCE DAILY SIGHTSEEING ATTRACTION TOUR





Travel Click
Travel Management Solutions
Travel Click (Thailand) Co., Ltd.

Travel Click (Thailand) Co., Ltd.



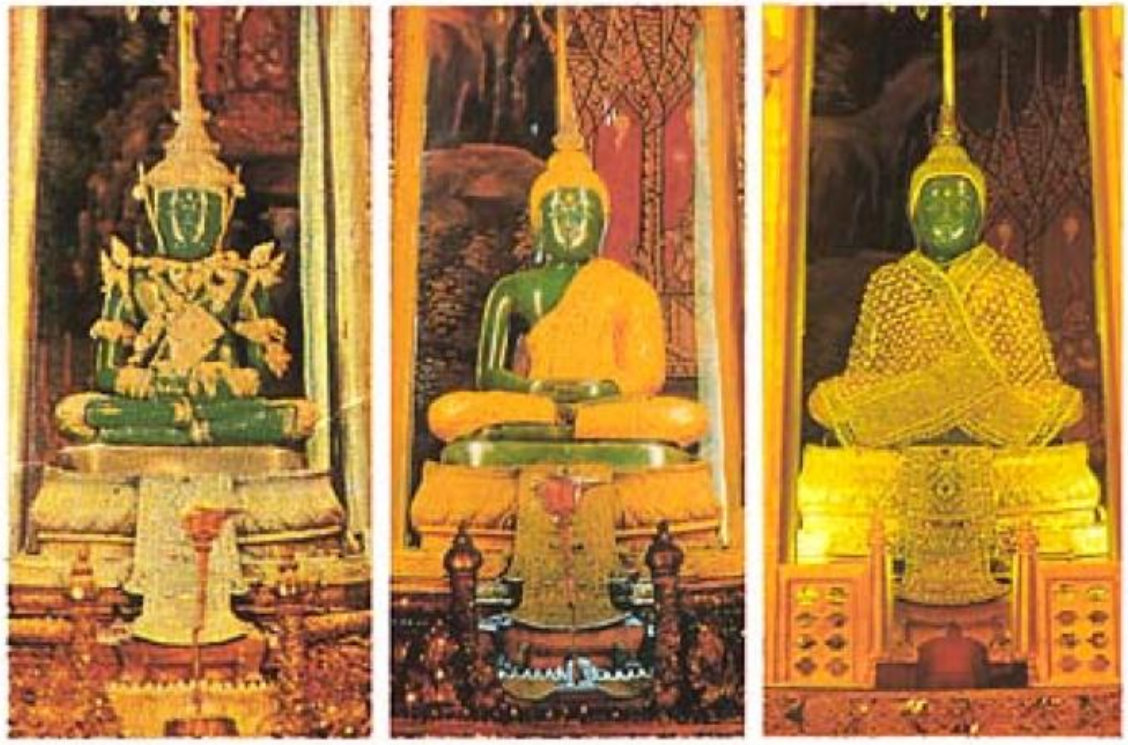
INFORMATION

Truly Travel Management Solutions

43/43 Soi Phrayapirane, Tungmahamek, Sathorn, Bangkok 10120

Telephone: 66 (0) 2249 4911 / Facsimile: 66 (0) 2249 9977

Email: mice@travelclick.biz Website: <http://www.TravelClick.Biz>



The Emerald Buddha

In 1779, the Thai General Chao Phraya Chakri put down an insurrection, captured Vientiane and returned the Emerald Buddha to Siam, taking it with him to Thonburi. After he became King Rama I of Thailand, he moved the Emerald Buddha with great ceremony to its current home in WatPhraKaew on 22 March 1784. It is now kept in the main building of the temple, the Ubosoth.

End of Page

This is only a statement of information, please refer to your designated Travel Counselor for online confirmation



Registered Approval
Number 11/3579

สมาคมไทยบริการท่องเที่ยว



Thai Travel Agents Association



Accredited
Agent



Travel Click
Travel Management Solutions
Travel Click (Thailand) Co., Ltd.

Travel Click (Thailand) Co., Ltd.



Truly Travel Management Solutions

43/43 Soi Phrayapirane, Tungmahamek, Sathorn, Bangkok 10120

Telephone: 66 (0) 2249 4911 / Facsimile: 66 (0) 2249 9977

Email: mice@travelclick.biz Website: <http://www.TravelClick.Biz>

INFORMATION

JOIN TOUR DESCRIPTION

The inconsistent understanding and miss communication makes more a lot of the problem feedback. There was a lot of tourism languages that traveller do not understand as same as the travel agents. So, we are going to explain you what is the join tour to make the same understanding that we have done for more than 30 years of our experience.

Join tour is the travel in-group between the different groups of tourists but go to the same tourist destination, you may get a new friend that go with you in the same or similar itinerary.

It is the low cost traveling for the traveller than you go by private family or private group, but sometimes you have to wait for the fellow travelers who late from the pick up time, traffic jams or who that buy the option tour because some activities is not include in the itinerary such as paddle boat, elephant riding, photography and sometimes you have to change the van by the way that go to your itinerary travel destination.

The pick up time sometime might be late because of traffic jam, same area that have same pick up time or tourist guide cannot find the guest. It is better if you standby about 5 minutes before the pick up time then the next pick up place might be not so late.

Thank you

End of Page

This is only a statement of information, please refer to your designated Travel Counselor for online confirmation



Registered Approval
Number 11/3579

สมาคมไทยบริการท่องเที่ยว



Thai Travel Agents Association



Accredited
Agent

BANGKOK

SJB1 Royal Grand Palace & Emerald Buddha

Daily: Morning 07.30 A.M. To 12.00 P.M.

Afternoon 12.00 A.M. To 16.30 P.M.

- Pick up from hotel.
- Visit **Royal Grand Palace & Emerald Buddha**: This city landmark should be the first place on any visitor's itinerary, which features some of the most spectacular architecture in South East Asia.
The palace begun in 1782. It is a consisting of several building with highly decorated architectural designs.
- **WatPhraKaew** (Temple of the Emerald Buddha) the magnificent Royal Chapel, WatPhraKaew in the same compound enshrines the Emerald Buddha Image, most revered by people.
- At the end of tour will be visit to local product store.

Remark: Please do not were short, sandals, no-sleeves T-shirts. Camera may not use inside the buildings.

Price: Adult: 1,300 Child: 1,040 / person / Joint with group / minimum 2 persons

No. of person	2-3 person	4 – 5 person	6 – 7 person	8 person up
Private	2,300/person	1,900/person	1,700/person	1,500/person

Tour includes: Transportation / All admission fee as in the itinerary / English Speaking Guide

Tour Excluded: Personal expenses / Option Tour



yal.oru@gmail.com

Truly Travel Management Solutions
43/43 Soi Phrayapirane, Tungmahamek, Sathorn, Bangkok 10120
Telephone: 66 (0) 2249 4911 / Facsimile: 66 (0) 2249 9977
Email: mice@travelclick.biz Website: <http://www.TravelClick.Biz>

INFORMATION

SJB2 Temples Tour

Daily: Morning 07.30 A.M. To 12.00 P.M.

Afternoon 12.00 A.M. To 16.30 P.M.

- Pick up from hotel.
- Visit to **Wat Traimitr** (Temple of the Golden Buddha) this is the world's largest solid gold Buddha, cast about nine centuries ago. The image is three meters high and weighs five and half tons.
- **Wat Pho** (Temple of the Reclining Buddha) it is Bangkok's oldest and largest temple. The gigantic gold plated reclining Buddha with inlaid mother-of-pearl soles is highly revered among Buddhists.
- At the end of tour will be visit to local product store

Price: Adult: 1100 Child: 880 / person / Joint with group / minimum 2 persons

No. of person	2 – 3 person	4 – 5 person	6 – 7 person	8 person up
Private	2,000/person	1,600/person	1,400/person	1,200/person

Tour includes: Transportation / All admission fee as in the itinerary / English Speaking Guide

Tour Excluded: Personal expenses / Option Tour



THE RECLINING BUDDHA



THE GOLDEN BUDDHA

SJB3 Amazing Bangkok Tour

Daily: Morning 07.30 A.M. To 12.00 P.M.

Afternoon 12.00 A.M. To 16.30 P.M.

- Pick up from hotel.
- Visit **Royal Grand Palace & Emerald Buddha**: This city landmark should be the first place on any visitor's itinerary, which features some of the most spectacular architecture in South East Asia. The palace begun in 1782. It is a consisting of several building with highly decorated architectural designs.
- **WatPhraKaew** (Temple of the Emerald Buddha) the magnificent Royal Chapel, WatPhraKaeo in the same compound enshrines the Emerald Buddha Image, most revered by people.
- **Cross Chao Phraya River by boat to visit WatArun.** (Temple of Dawn) The most attractive in this temple is the pagoda Khmer – style. WatArun was restored during brief Thonburi period to be the Royal Chapel of King Taksin.
- At the end of tour will be visit to local product store

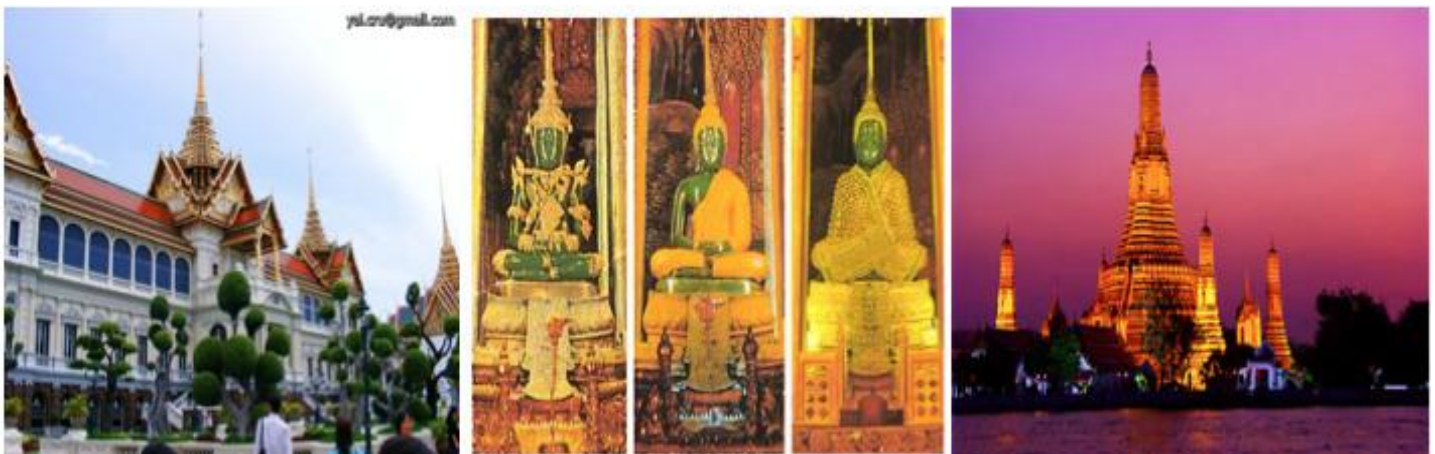
Remark: Please do not were short, sandals, no-sleeves T-shirts. Camera may not use inside the buildings.

Private only

No. of person	2 – 3 person	4 – 5 person	6 – 7 person	8 person up
Private	2,600/person	2,200/person	2,000/person	1,800/person

Tour includes: Transportation / All admission fee as in the itinerary / English Speaking Guide

Tour Excluded: Personal expenses / Option Tour



SJB4 Landmark of Bangkok Tour

Tuesday – Sunday: Morning 08.00 A.M. To 16.00 P.M.

- **WatTraimitr**(Temple of the Golden Buddha) this is the world’s largest solid gold Buddha, cast about nine centuries ago. The image is three meters high and weighs five and half tons.
- **Wat Pho** (Temple of the Reclining Buddha) it is Bangkok’s oldest and largest temple. The gigantic gold plated reclining Buddha with inlaid mother-of-pearl soles is highly revered among Buddhists.
- **Royal Grand Palace & Emerald Buddha:** This city landmark should be the first place on any visitor’s itinerary, which features some of the most spectacular architecture in South East Asia. The palace begun in 1782. It is a consisting of several building with highly decorated architectural designs.
- **WatPhraKaew** (Temple of the Emerald Buddha) the magnificent Royal Chapel, WatPhraKaew in the same compound enshrines the Emerald Buddha Image, most revered by people.
- **Lunch at restaurant**
- **WatArun.** (Temple of Dawn) The most attractive in this temple is the pagoda Khmer – style. WatArun was restored during brief Thonburi period to be the Royal Chapel of King Taksin.
- At the end of tour will be visit to local product store

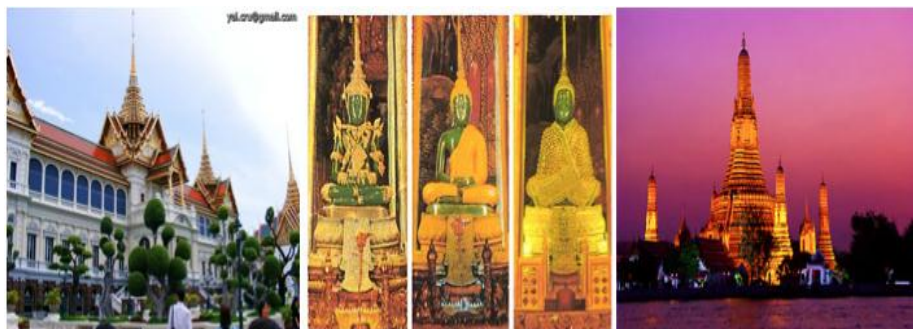
Remark: Please do not were short, sandals, no-sleeves T-shirts. Camera may not use inside the buildings.

Private only

No. of person	2 – 3 person	4 – 5 person	6 – 7 person	8 person up
Private	3,700/person	3,000/person	2,800/person	2,600/person

Tour includes: Transportation / All admission fee as in the itinerary / Lunch / English Speaking Guide

Tour Excluded: Personal expenses/Option Tour



SJB5 Bangkok Canal Tour

Bangkok-Noi Canal & National Museum of the Royal Barges

Daily: Morning 08.00 A.M. To 12.00 P.M.

Afternoon 12.00 A.M. To 16.00 P.M.

A boat along the legendary Chao Phraya River and Bangkok-Noi canals on the Thon Buri side is the most pleasant way to explore the city once dubbed “**Venice of the East**”. The majestic charm of the Chao Phraya adds perspective to your exploration of the city’s premier attractions.

- Pick up from hotel.
- Take along tail boat along the **Chao Phraya River and canal**. The life-style of Thai people has always been associated with waterways.
- **National Museum of the Royal Barges**; only the King and the Royal family used The Royal when they traveled. The ceremony of Royal travel by water has been a tradition since the Ayutthaya period.
- At the end of tour will be

Private only

No. of person	2 – 3 person	4 – 5 person	6 – 7 person	8 person up
Private	2,000/person	1,500/person	1,400/person	1,100/person

Tour includes: Transportation / All admission fee as in the itinerary / English Speaking Guide

Tour Excluded: Personal expenses / Option Tour



Bangkok-Noi Canal



Royal Barges

SJB7 Antique Thai House & Palace

Daily: Afternoon 12.00 A.M. To 16.30 P.M.

- Pick up from hotel.
- **Jim Thompson House** is a house belongs to the late **James H.W. Thompson** who came to Thailand as an officer in the US force during World War II. The name Jim Thompson became synonymous with Thai silk. He had arranged for dismantling of ancient teak houses from various place and reassembled on the bank of Sansap Canal in Bangkok. He mysteriously disappeared during a visit to the Cameron Highlands in Malaysia in 1967.
- **SuanPakkad Palace**; used to be the residence of Princess ChumbhotpongParipatra of NagorSvarga, one of Thailand's leading art collector. There is a complex of five traditional Thai House, overlooking a beautifully kept garden. They house a large collection of Asia art and antiques.
- At the end of tour will be visit to local product store

Remark: Please do not wear short, sandals, no-sleeves T-shirts. Camera may not use inside the buildings.

Private only

No. of person	2 – 3 person	4 – 5 person	6 – 7 person	8 person up
Private	1,800/person	1,700/person	1,600/person	1,300/person

Tour includes: Transportation / All admission fee as in the itinerary / English Speaking Guide

Tour Excluded: Personal expenses / Option Tour



Jim Thompson House



Suan Pakkad Palace

Truly Travel Management Solutions
43/43 Soi Phrayapirane, Tungmahamek, Sathorn, Bangkok 10120
Telephone: 66 (0) 2249 4911 / Facsimile: 66 (0) 2249 9977
Email: mice@travelclick.biz Website: <http://www.TravelClick.Biz>

INFORMATION

SJB23 Safari World

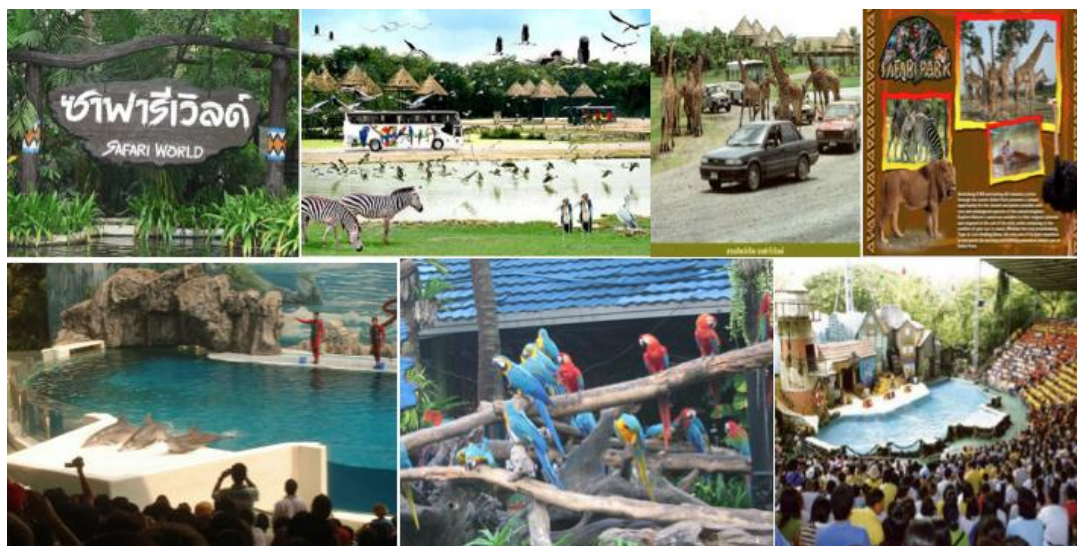
Every day Morning: 08.00 A.M. To 17.00 P.M.

- Pick up from hotel.
- **Safari World**, with in an area of 170 acres and is divided into 2 part. The first, the Safari Park, house a large variety of animals like **zebra, deer, giraffe, bird, tiger, lion, bear**, etc. in natural habitat. The second, the Marine Park, exhibits marine and some rare animals. You can enjoy performances by trained animals like dolphins, birds, seals, and monkeys.
- **Lunch at Safari World.**
- Transfer back to hotel.
- At the end of tour will be visit to local product store.

Price: Adult: 1500 Child: 1200 / person / Join with group / Minimum 2 person

No. of person	2 – 3 person	4 – 5 person	6 – 7 person	8 person up
Private	3,100/person	2,100/person	2,000/person	1,900/person

Tour includes: Transportation / All admission fee as in the itinerary / Lunch /English Speaking Guide
Tour Excluded: Personal expenses / Option Tour



Truly Travel Management Solutions
43/43 Soi Phrayapirane, Tungmahamek, Sathorn, Bangkok 10120
Telephone: 66 (0) 2249 4911 / Facsimile: 66 (0) 2249 9977
Email: mice@travelclick.biz Website: <http://www.TravelClick.Biz>

INFORMATION

SJB24 Dream World

Every day Morning: 08.00 A.M. To 17.00 P.M.

- Pick up from hotel.
- Visit to **Dream World** It is a beautiful land designed in classic style and decorated with European style plaza miniature land of the major world legend and exciting playing machines.
- Lunch at Dream World
- Transfer back to hotel.
- At the end of tour will be visit to local product store.

Price: Adult: 1500 Child: 1200 / person / Join with group / Minimum 2 person

No. of person	2 – 3 person	4 – 5 person	6 – 7 person	8 person up
Private	3,100/person	2,100/person	2,000/person	1,900/person

Tour includes: Transportation / All admission fee as in the itinerary / Lunch /English Speaking Guide
Tour Excluded: Personal expenses / Option Tour



NAKHON PATHOM, RATCHABURI, SAMUTSONGKRAM

SJB9 Thai Cultural at Rose Garden

Everyday

Afternoon: 12.00 A.M. To 18.00 P.M.

- Pick up from hotel.
- Arrival at **Rose Garden**, Enjoy the unique and unforgettable experience of the world-renowned Thai Village Cultural Show. Over 150 performers vividly portray a fascinating cross-section of Thailand's culture, heritage and way of life -- dances, ceremonies, rituals, sports and pastimes. The 60-minute action-packed show highlights:
- **Thai Martial Arts: Thai-style boxing show** is extremely popular in Thailand. Accompanied by its unique ritual and ceremony, it is an art that demands a high degree of skill and fitness. The boxers dance around with great agility and are permitted to use - elbows, hands, feet, knees. In fact, just about any part of their supple and well-sculpted physique.
- **Sword fighting**, a traditional and historical form of combat for both male and female warriors dates back over 600 years.
- **Thai Wedding Ceremony Show**: Witness a traditional Thai wedding ceremony performed according to ancient Thai customs. It is a ceremony of pageantry, humility, joy and splendor with all the friends and relatives of the newly-weds participating.
- At the end of tour will be visit to local product store.

Private Only

No. of person	2 – 3 person	4 – 5 person	6 – 7 person	8 person up
Private	2,500/person	1,900/person	1,500/person	1,300/person

Tour includes: Transportation / All admission fee as in the itinerary / English Speaking Guide

Tour Excluded: Personal expenses / Option Tour



Thai Wedding Ceremony Show



Thai folk dance

SJB10 Samphran Elephant Theme Show

Every day Afternoon: 12.00 A.M. To 18.00 P.M.

- Pick up from hotel depart for **Samphran Elephant Ground & Zoo**.
- **Crocodile Wrestling Show:** Samphran Elephant Ground & Zoo also offers spectacular shows of Crocodile wrestling between man and crocodiles. It has been acclaimed to have one of the cleanest and most impressive public crocodile displays in the world. (CITES 1991)
- **Elephant Theme Show:** for the first time ever an elephant show complete with dramatic sounds and narration. Be entertained by demonstrations of elephants at work, playing football dancing and at play. See for yourself how elephants are rounded up and used during battles in ancient Siam, where Siamese and Burmese armies dressed in full battle gear once used elephants.
- At the end of tour will be visit to local product store.

Private Only

No. of person	2 – 3 person	4 – 5 person	6 – 7 person	8 person up
Private	2,500/person	1,900/person	1,500/person	1,300/person

Tour includes: Transportation / All admission fee as in the itinerary / English Speaking Guide

Tour Excluded: Personal expenses / Option Tour



SJB12 Damnernsaduak Floating Market (Morning Market)

Every day

Duration: 06.30 A.M. To 14.00 P.M.

- Pick up from hotel depart Bangkok for Samut-Songkram province.
- Arrival at Damnernsaduak district takes a long tail speedboat along the canal to floating market. **Damnernsaduak Floating Market**, this is the best-known destination in Radchaburi where the timeless lifestyle of native Thai people can be observed along the canals.

Special for Private only

- **Visit Rom-Hoob Market** (means umbrella fold market) or railway market one of the amazing Thailand's tourist destination. The market is sheltered by low-hanging awnings/umbrellas and if you look closely, you will notice that you are actually walking on train rails.

Price: Adult: 900 Child: 720 / person (join with group)

Private

No. of person	2 – 3 person	4 – 5 person	6 – 7 person	8 person up
Private	2,900/person	1,800/person	1,300/person	1,100/person

Tour includes: Transportation / All admission fee as in the itinerary / English Speaking Guide
Tour Excluded: Personal expenses / Option Tour



Damnernsaduak Floating Market



Umbrella Fold Market

SJB13 Damnernsaduak Floating Market, Sampran Elephant Them Show & Thai Cultural Show at Rose Garden

Every day

Duration: 06.30 A.M. To 18.00 P.M.

- Pick up from hotel depart Bangkok for SamutSongkram province.
- Arrival at Damnernsaduak district takes a long tail speedboat along the canal to floating market. **DamnernSaduakFoating Market**, this is the best-known destination in Rachaburi where the timeless lifestyle of native Thai people can be observed along the canals.
- Visit to **Royal Thai Handicraft Village**.
- **Lunch** at Sampran Elephant Ground & Zoo.
- After lunch visit to Sampran Elephant Ground & Zoo **Crocodile Wrestling Show**: Sampran Elephant Ground & Zoo also offers spectacular shows of Crocodile Wrestling between man and crocodiles. It has been acclaimed to have one of the cleanest and most impressive public crocodile displays in the world. (CITES 1991)
- **Elephant Theme Show**: for the first time ever an elephant show complete with dramatic sounds and narration.
Be entertained by demonstrations of elephants at work, playing football dancing and at play. See for yourself how elephants are rounded up and used during battles in ancient Siam, where Siamese and Burmese armies dressed in full battle gear once used elephants.
- **Rose Garden**, Enjoy the unique and unforgettable experience of the world-renowned Thai Village Cultural Show. Over 150 performers vividly portray a fascinating cross-section of Thailand's culture, heritage and way of life -- dances, ceremonies, rituals, sports and pastimes.
- At the end of tour will be visit to local product store.

Price: Adult: 1800 Child: 1440 / person / Joint with group

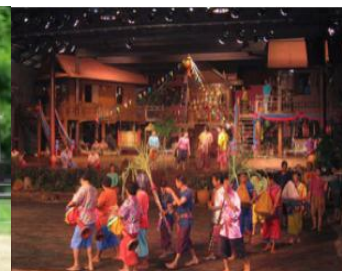
No. of person	2 – 3 person	4 – 5 person	6 – 7 person	8 person up
Private	3,900/person	2,900/person	2,200/person	1,900/person

Tour includes: Transportation / All admission fee as in the itinerary / Lunch /English Speaking Guide

Tour Excluded: Personal expenses / Option Tour



Damnernsaduak Floating Market



Thai Wedding Ceremony Show

SJB11 Amphawa Floating Market& Umbrella fold Market (Evening Market)

Every Friday – Saturday - Sunday

- Pick up Time 14.00 – 18.00
- Pick Up and depart from Bangkok to Samut-Songkram Province
- Visit **Rom-Hoob Market** (means umbrella fold market) or railway market one of the amazing Thailand's tourist destination. The market is sheltered by low-hanging awnings/umbrellas and if you look closely, you will notice that you are actually walking on train rails.
- Visit **Amphawa floating market** an alternative **Evening Floating and typical market** where you can enjoy their way of Life along Canal and Lovely Village
- Transfer back to Bangkok

Private Only

No. of person	2 – 3 person	4 – 5 person	6 – 7 person	8 person up
Private	2,900/person	1,800/person	1,300/person	1,100/person

Tour includes: Transportation / All admission fee as in the itinerary / English Speaking Guide

Tour Excluded: Personal expenses / Option Tour



Umbrella Fold Market



Amphawa Floating Market

SAMUTPRAKARN

SJB8 Ancient City

Everyday

Duration: 07.00 A.M. To 13.00 P.M.

- Pick up from hotel depart for Samutprakarn province.
- **The Ancient City**, like a door opened to the cultural in heritage of Siam. You are able to see the continuity of the history, arts, cultures, religious, thoughts as well as the believes of Thai talents. It shall reflect to Thai fundamentals and the varieties of the cultures on Thai territories. The historical of Siam will visually be revived at The Ancient City.
- At the end of tour will be visit to local product store.

Private Only

No. of person	2 – 3 person	4 – 5 person	6 – 7 person	8 person up
Private	2,900/person	2,600/person	2,000/person	1,700/person

Tour includes: Transportation / All admission fee as in the itinerary / English Speaking Guide

Tour Excluded: Personal expenses / Option Tour



KANCHANABURI

SJB18 River Kwai with Death Railway

Every day

Duration: 06.30 A.M. To 18.00 P.M.

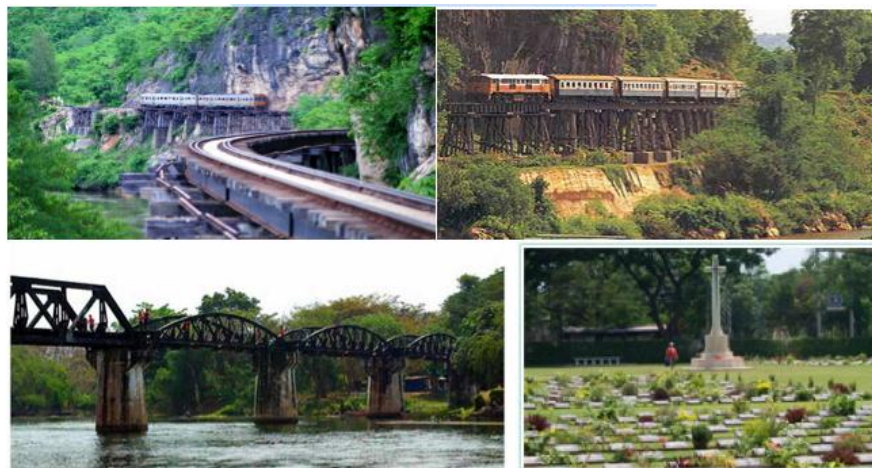
- Pick up from hotel depart Bangkok for Kanchanaburi province.
- **JEATH War Museum** This enclave in the riverside precincts of WatChaichumphon has been constructed largely in the form of allied prisoners of war camp. The name **JEATH** is derived from Japan, England, America, Australia, Thailand and Holland.
- **Kanchanaburi War Cemetery**, This cemetery contain the remains of 6,982 war prisoners who lost their lives during the Captivity of the Japanese Army that forced them to build the Bridge over the River Kawi and the Death Railway.
- **The Bridge over the River Kwai**, Internationally famous, the black iron bridge was brought from Java by the Japanese Army and reassembled under Japanese supervision by Allied prisoners of war labor as part of the “Death Railway” linking Thailand with Myanmar.
- Train Ride about 1 hour (Kanchanaburi St.-Wang Pho St.).
- **Lunch at restaurant**
- At the end of tour will be visit to local product store.

Price: Adult: 1700 Child: 1360 / person / Join with group

No. of person	2 – 3 person	4 – 5 person	6 – 7 person	8 person up
Private	3,900/person	2,900/person	2,100/person	1,900/person

Tour includes: Transportation / All admission fee as in the itinerary / Lunch /English Speaking Guide

Tour Excluded: Personal expenses / Option Tour



AYUTTHAYA

SJB 20 Ayutthaya World Heritage Tour

Every day Morning: 06.30 A.M. To 15.00 P.M.

- **Pick up from hotel** depart for **Bang Pa-in**
- **Bang Pa-in Palace:** Originally, there was a riverine island. When Prasat Thong became the Ayuttaya king (1630-1655) The palace contains five important buildings as follow
- **PhraThinangAisawanThippa-ard,** Thai design castle pavilion stands in the middle of the lake.
- **PhraThinangWarophatPhiman,** occupies the original site of the Pavilion built during King Mongkut's reign. It was two storied. One used as the King's apartment, the other as a reception hall.
- **PhraThinangUthayanPhumisathian,** was almost totally destroyed by fire in 1938. Formerly used as a highwater season residence, only a few bricks remain.
- **PhraThinangWehatChamrun,** is a Chinese-style building where the court generally resided during the rainy and cool seasons.
- **PhraThinangWithunThatsana,** is an observatory standing on a small island between PhraThinangUthayan and PhraThinangWehatChamrun from which a commanding view of surrounding countryside.
- **WatPhra Si Sanphet:** This is the most important temple within the Royal Palace compound and corresponds to The Emerald Buddha Temple in Bangkok's Grand Palace.
- **Lunch at restaurant**
- **WatYaiChaimongkol:** This temple is also called "Wat Chao Phraya Thai" It was built By King U-Thong in 1357 for meditation.
- **WihanPhraMongkhonBophit :** The principal Buddha image is one of Thailand's largest bronze Images. Many small Buddha were also discovered. The Wihan was destroyed when the Burmese sacked Ayuttaya in 1767 and was rebuilt in 1956 in its original style.
- **WatMahathat** or the "Monastery of the Great Relic" is located on the city island in the central part of Ayutthaya
- At the end of tour will be visit to **local product store.**

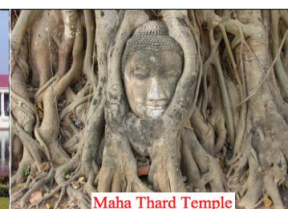
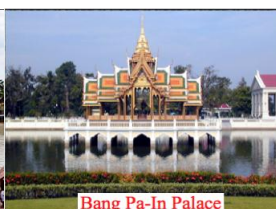
Private Only: Visit Ayothaya Floating Market

Price: Adult: 1700 Child: 1360 / person / Join with group

No. of person	2 – 3 person	4 – 5 person	6 – 7 person	8 person up
Private	3,900/person	2,900/person	2,100/person	1,900/person

Tour includes: Transportation / All admission fee as in the itinerary / Lunch / English Speaking Guide

Tour Excluded: Personal expenses / Option Tour



SJB21 Ayutthaya by Cruise Program

Everyday

- 07:30 Pick up at major hotels in Bangkok, and then embark the coach
07:45 Depart Bangkok by air-conditioned coach.
09:00 Arrive at Bang Pa-In Summer Palace, former residence of Thai Kings from 17th Century. Bang Pa-In has a captivating collection of marvelous pavilions in a variety of Thai, Chinese, Italian and Victorian architectural styles, encircled by beautiful gardens and lake.
11:00 Arrive in Ayutthaya and visit WatPhrasrisanphet, the city's largest temple built in 14th Century and used as the royal temple-cum-palace by several kings, ViharnPhraMonkolBopit, WatMaha That, constructed by King Prasathong in 1630.
13:00 Step aboard the luxurious cruiser "Grand Pearl" at WatPotangtai Pier near Bangsai (the royal folk arts and handicrafts center). Enjoy a superb buffet lunch, featuring a delightful variety of oriental and western dishes, then relax on the decks and enjoy the fascinating scenery along the banks of the River of Kings, passing through Pathumthani and Nonthaburi provinces before arriving in Bangkok.
15:00 Enjoy a coffee break as you take in the enchanting sights along the Chao Phraya riverbanks, including the Royal Barges Museum, Thammasart University, The Grand Palace, Temple of the Emerald Buddha and the graceful Temple Of Dawn.
16:30 Arrive at the River City Pier, and transfer to the hotel

ADULT 2100 BAHT CHILD (4-10Yrs.) 1600 BAHT

No. of person	2 – 3 person	4 – 5 person	6 – 7 person	8 person up
Private	4,900/person	3,800/person	3,200/person	3,000/person

Tour includes: Transportation / All admission fee as in the itinerary / Lunch /English Speaking Guide
Tour Excluded: Personal expenses / Option Tour



PATTAYA

SJB22 Pattaya&Coral Island

Everyday 6.30 to 18.00

- Pick up from hotel
- Now a world-renowned seaside resort on the eastern shore of the gulf of Siam, Pattaya beach has a charm of its own-exotic beach. Depart by boat to Coral Island, the largest of Pattaya's archipelago. Lunch at restaurant on the Island and free at leisure on the beach until return to Pattaya.
- Transfer back to Bangkok

Price: Adult: 1,700 Child: 1,360 / person / Join with group

No. of person	2 – 3 person	4 – 5 person	6 – 7 person	8 person up
Private	3,900/person	2,900/person	2,100/person	1,900/person

Tour includes: Transportation / All admission fee as in the itinerary / Lunch /English Speaking Guide

Tour Excluded: Personal expenses / Option Tour

